



STARHOTELS[®]
PREMIUM

President
GENOVA

President

GENOVA

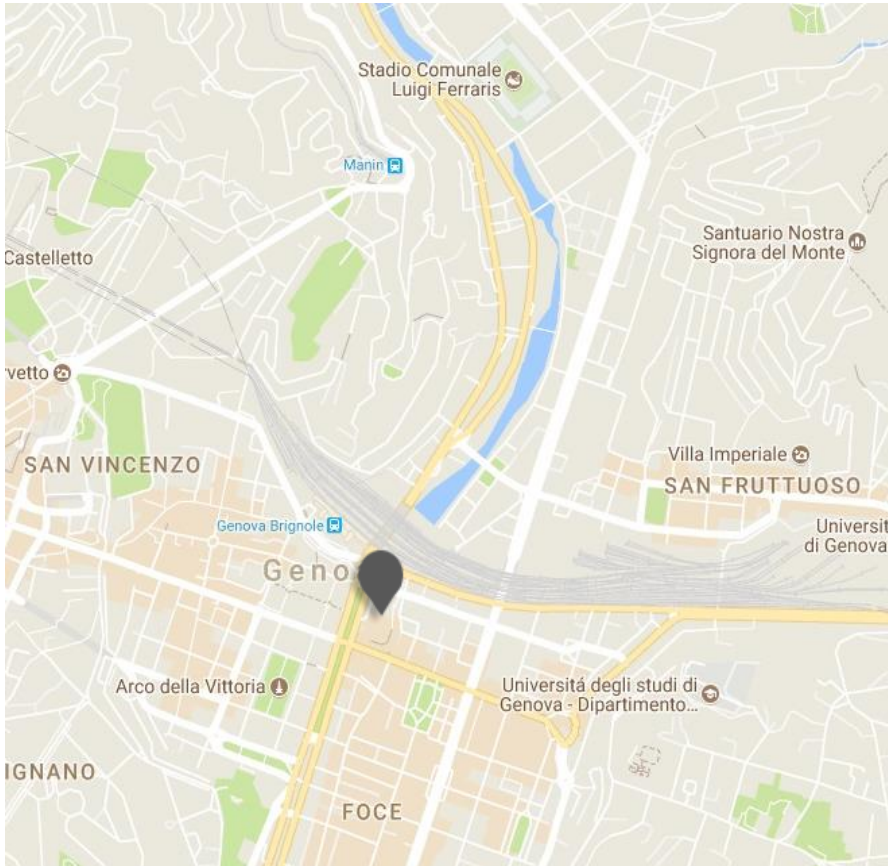


Contemporary chic, historic charm

Located in the modern Corte Lambruschini management centre, in the heart of Genoa, and opposite to the Brignole railway station, the refined elegance of the Starhotels President reflects Genoa's intriguing dual character as a contemporary urban hub and a city shaped by its long, eventful history. All of the 188 rooms and suites offer guests every modern comfort, spacious interiors and chic, refined décor. The large windows provide a magnificent view over the city. The La Corte by Eataly restaurant delights diners with dishes inspired by the culinary traditions of Liguria.

President

GENOVA



Location

In the modern management centre of Corte Lambruschini in the heart of Genoa, opposite to the Brignole railway station and within easy reach of the historic centre

Distances

Railway station: Km 0,2

Highway: Km 4

Fairgrounds: Km 1

Airport: Cristoforo Colombo Km 11

Corte Lambruschini, 4 - 16129 Genova - ITALY
T +39 010 57271 F +39 010 5531820
president.ge@starhotels.it
starhotels.com

President

GENOVA

Restaurant & Bar

The elegant, refined La Corte by Eataly restaurant delights guests with a wonderful selection of Ligurian and international dishes, benefitting from an exclusive partnership with Eataly.

The La Corte by Eataly bar is the ideal place for an excellent coffee, a light lunch or a cocktail in an intimate, welcoming atmosphere.



President

GENOVA



188 Rooms

- 71 Classic
- 30 Superior
- 64 Deluxe
- 16 Deluxe City View
- 1 Junior Suite
- 2 Suite
- 4 Family

The 188 spacious rooms and suites boast every modern comfort and an elegant, contemporary style, with natural colours that create a chic, refined atmosphere. The large windows offer a magnificent view of the city.



President

GENOVA



Meetings & Events

Meeting rooms: 7

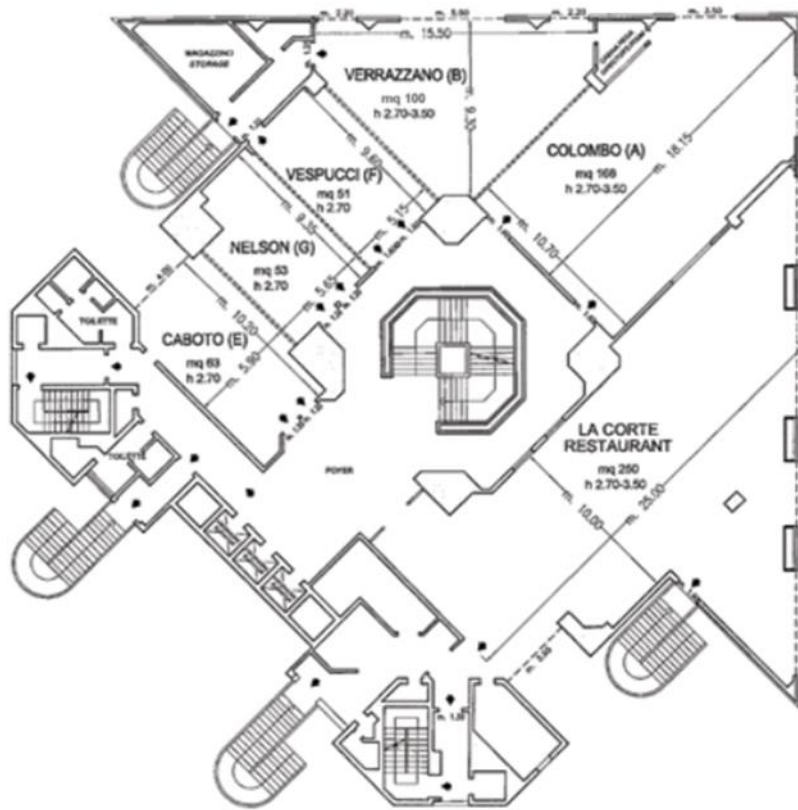
Capacity (theatre style): 400 max

The hotel offers 7 versatile meeting rooms that can cater for up to 400 people. All the rooms are equipped with hi-tech conference facilities, and guests will also enjoy the support of a team of professionals.

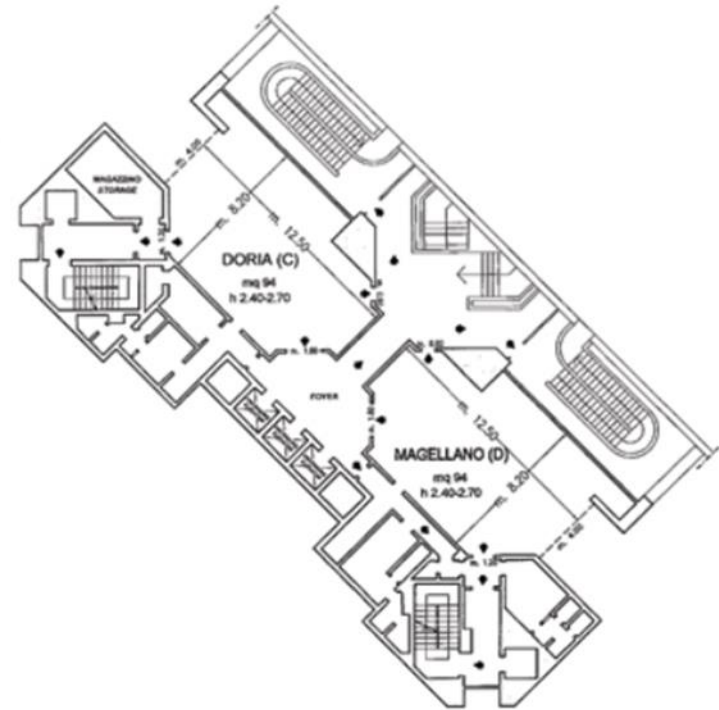


President

GENOVA



Piano Primo / First Floor



Piano Secondo / Second Floor

- ◆ Uscite di sicurezza / Emergency Exits
- Finestre / Windows
- Pareti mobili / Modular Walls
- Colonne / Columns

President

GENOVA

Meeting rooms	Area mq / ft.	L x W mt. / ft.	Height mt. / ft.	Theatre	Class room	Conference table/ U-shape	Cabaret style^	Cocktail reception	Banquet
Colombo (A)°	168 1807,68	18,15x10,70 59,55x35,10	2,70-3,50 8,86-11,48	180	90	50	56	120	100
Verrazzano (B)**°	100 1076,39	9,30x15,50 30,51x50,85	2,70-3,50 8,86-11,48	70	10	15	25	60	40
Doria (C)°	94 1011,44	12,50x8,20 41,01x26,90	2,40-2,70 7,87-8,86	80	40	30	28	50	35
Magellano (D)°	94 1011,44	12,50x8,20 41,01x26,90	2,40-2,70 7,87-8,86	80	40	30	28	50	35
Caboto (E)°	63 677,88	10,20x5,90 33,46x19,36	2,7 8,86	50	25	25	15	40	30
Vespucci (F)	51 548,76	9,60x5,15 31,50x16,90	2,7 8,86	40	16	20	15	35	25
Nelson (G)	53 570,28	9,35x5,65 30,68x18,54	2,7 8,86	40	16	15	15	35	25
(A+B)°	268 2883,68	**	2,70-3,50 8,86-11,48	270	100	65	70	180	140
(B+F)°	150 1614	**	2,70-3,50 8,86-11,48	110	50	30	24	95	65
(E+G)°	116 1248,16	**	2,7 8,86	80	40	40	30	75	55
(F+G)°	104 1119,04	9,35x10,80 30,68x35,43	2,7 8,86	90	40	35	25	70	50
(E+F+G)°	167 1796,92	**	2,7 8,86	120	50	60	40	110	80
(B+E+F+G)°	267 2872,92	**	2,70-3,50 8,86-11,48	270	90	75	70	170	120
(B+F+G)°	204 2195,84	**	2,7 8,86	190	60	50	55	130	90
(A+B+F)°	319 3433,69	**	2,7 8,86	300	116	85	96	215	165
(A+B+F+G)°	372 4004,17	**	2,7 8,86	350	132	100	111	250	190
(A+B+E+F+G)°	435 4680,6	**	2,70-3,50 8,86-11,48	400	157	125	126	290	220
N.4 Studio Junior Suite°	32 344,32	8,00x4,00 26,25x13,12	2,7 8,86	20	10	15	-	-	-
La Corte by Eataly Restaurant°	250 2690	25,00x10,00 82,02x32,81	2,70-3,50 8,86-11,48	-	-	-	-	170	190

° Daylight

* To be used only in conjunction with the other modular meeting rooms

** Please refer to the sizes of each modular meeting room

^ Diameter tables cm 180, up to 6 pax each